



# NEWAY

EXCLUSIVE DOORS

EXTRAORDINARY



NEWAY

WHY DON'T YOU SHOW THE BEST PART OF YOU

Your door says much more about you than you might think.  
When your guests set foot in your house, they think about you, about themselves and the way you make them feel welcome. They subconsciously register your status, ponder over who you are, think of your nature, your sense of style, elegance and imagination.  
That's the same with you, when you come back home you want to believe that your door, as well as being secure, will reflect your taste.  
We believe that everyone wants to bring out their best.  
That's the way we do and you're invited to follow us.

*Mariusz Kołakowski*

Mariusz Kołakowski  
NEWAY owner



For the past 16 years, the number of our satisfied customers, who live all around the world, have been constantly growing. Plastixal company, a well-known, reputable, internationally recognised and appreciated door and window manufacturer created the NEWAY brand by separating the division of production of exterior doors from the rest of the company. This was the best solution to allow NEWAY doors to evolve at an even faster pace. As a result, a product that is uniquely designed, well-equipped and secure was created. Thousands of people around the world have confidence in us. You can do it too.

DESIGNED B.

# PASSION

OF CREATION

NEWAY doors were born from our passion for design. Modern design, maximum comfort and materials of the highest quality are the basis on which our doors have been created, but the work could only be considered complete when we managed to give them an eye-catching and original appearance.





**P101**

Frame color: RAL 9005  
 Sash color: RAL 9005  
 Handle: QS - 316 stainless steel, 1000mm



**P102**

Frame color: RAL 9005  
 Sash color: Woodec Alpine veneer  
 Applications: Black, flush  
 Handle: QA10, RAL 9005, 1600mm



**P103**

Frame color: RAL 9005  
 Sash color: Woodec Malt veneer  
 Applications: Black, flush  
 Handle: QA10, RAL 9005, 1600mm



**P104**

Frame color: RAL 7016  
 Sash color: RAL 7016 / Montana veneer  
 Glass: VSG 33.1, sandblasted according to the pattern  
 Applications: Milling  
 Handle: P10, 304 stainless steel, 1000mm



**P105**

Frame color: RAL 9007  
 Sash color: RAL 9007 / Montana veneer  
 Glass: VSG 33.1, sandblasted according to the pattern  
 Handle: P10, 304 stainless steel, 1200mm



**P106**

Frame color: RAL 7016  
 Sash color: RAL 7016  
 Glass: Sandblasted according to the pattern  
 Applications: Flush stainless steel, milling  
 Handle: P10, 304 stainless steel, 1000mm



### P107

Frame color: RAL 7016  
Sash color: RAL 7016  
Applications: flush with Woodec veneer, milling  
Handle: PA10, RAL 9005, 800mm



### P108

Frame color: RAL 7016  
Sash color: RAL 7016 / decoral  
Winchester  
Applications: milling  
Handle: QA10, RAL 9005, 1600mm



### P109

Frame color: RAL 9005  
Sash color: Woodec Malt veneer Glass: VSG 33.1, sandblasted according to the pattern  
Applications: black, flush  
Handle: QA10, RAL 9005, 1600mm



### P110

Frame color: RAL 9005  
Sash color: DB 703 / Woodec Malt veneer  
Applications: milling  
Handle: QA10, RAL 9005, 1600mm





### P111

Frame color: RAL 7021  
 Sash color: RAL 7021  
 Applications: milling  
 Handle: PW21, RAL 9005, matched to the length of the sash



### P112

Frame color: RAL 1023  
 Sash color: RAL 1023  
 Applications: milling  
 Handle: QA10, RAL 9005, 2000mm



### P113

Frame color: RAL 9005  
 Sash color: Woodec Toffee veneer  
 Glass: VSG 33.1, frosted  
 Applications: black, flush  
 Handle: QA10, RAL 9005, 1200mm



### P114

Frame color: RAL7016  
 Sash color: RAL 7016  
 Glass: VSG 33.1, frosted  
 Applications: Flush stainless steel  
 Handle: P10, 304 stainless steel, 1000mm



### P115

Frame color: RAL 9007  
 Sash color: RAL 9007  
 Applications: flush, RAL 9005  
 Glass: VSG 33.1, frosted  
 Handle: QA10, RAL 9005, 1800mm



### P116

Frame color: RAL 9005  
 Sash color: Woodec Concrete veneer  
 Glass: VSG 33.1, frosted  
 Applications: flush, RAL 9005  
 Handle: QA10, RAL 9005, 1600mm



### P117

Frame color: RAL 9005  
 Sash color: Woodec Toffee veneer  
 Glass: VSG 33.1, frosted  
 Applications: flush, RAL 9005  
 Handle: QA10, RAL 9005, 1600mm



### P118

Frame color: RAL 9005  
 Sash color: Turner Oak Malt veneer  
 Applications: Black, flush  
 Handle: KA1, RAL 9005 lacquer, 800mm



### P119

Frame color: Winchester  
 Sash color: Winchester lacquer  
 Applications: Black, flush  
 Handle: KA1, Winchester lacquer, 800mm





### P120

Frame color: RAL 9016  
Sash color: RAL9016  
Application: flush stainless steel  
Handle: KA1, RAL 9016, 1000mm



### P121

Frame color: RAL 9006  
Sash color: RAL9006  
Application: Montana veneer  
Handle: KA1, RAL9006, 1000mm



### P122

Frame color: RAL 9016  
Sash color: RAL 9016  
Application: woodgrain glued, milling  
Glass: VSG 33.1, reflex graphite  
Handle: K1L 400 x 115 mm



### P123

Frame color: RAL 7016  
Sash color: RAL 7016  
Applications: milling  
Handle: KA1, RAL7016, 1600mm



### P124

Frame color: RAL 7016  
Sash color: RAL 7016  
Applications: flush stainless steel  
Handle: KA1, RAL7016, 1600m







**P125**  
Frame color: DB 703  
Sash color: DB 703  
Applications: milling  
Handle: integrated, DB 703, 700mm



**P126**  
Frame color: RAL 7016  
Sash color: RAL 7016  
Applications: milling  
Handle: integrated, RAL 7016, 1300mm



**P127**  
Frame color: DB 703  
Sash color: DB 703 and RAL 7016  
Applications: milling  
Handle: integrated, RAL 7016, 1600mm



**P128**  
Frame color: RAL 9005  
Sash color: Winchester lacquer / RAL 9005  
Application: flush in RAL 9005 color  
Handle: KA1, RAL 9005, 1600mm





**P129**

Frame color: RAL 9007  
 Sash color: RAL 9007  
 Handle: KA1, RAL 9007, 1600mm



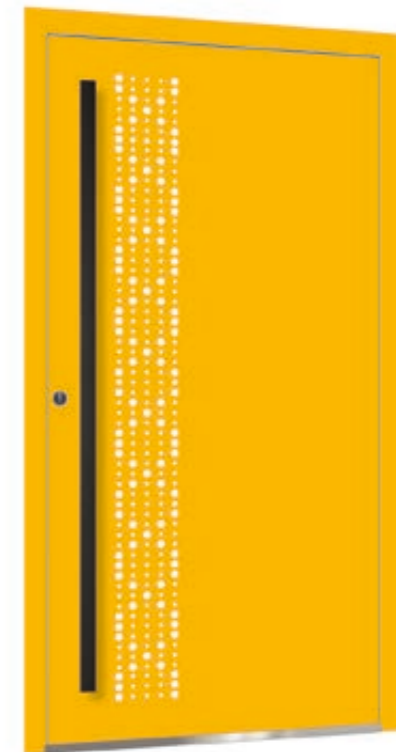
**P130**

Frame color: RAL 7032  
 Sash color: RAL 7032  
 Applications: round holes with VSG  
 33.1 + frosted glass  
 Handle: QA10, RAL 9005, 1600mm



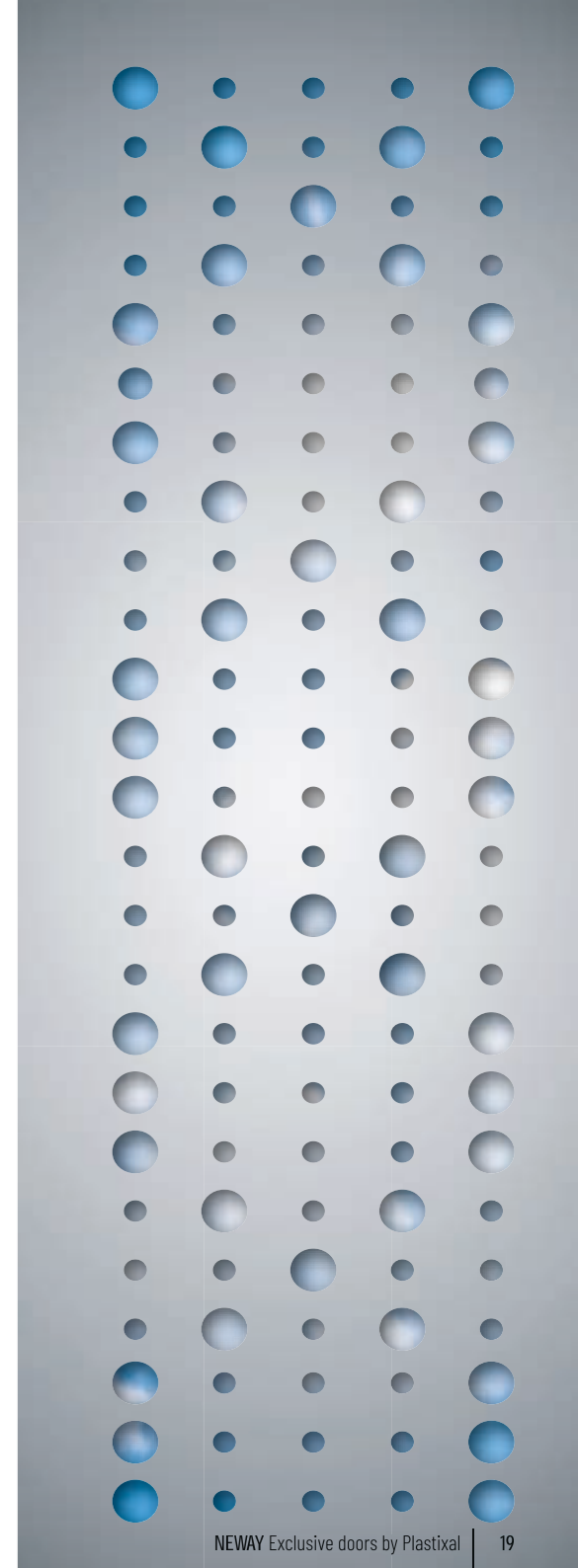
**P131**

Frame color: RAL 9016  
 Sash color: RAL 9016  
 Applications: round holes with VSG  
 33.1 + frosted glass  
 Handle: QA10, RAL 9005, 1600mm



**P132**

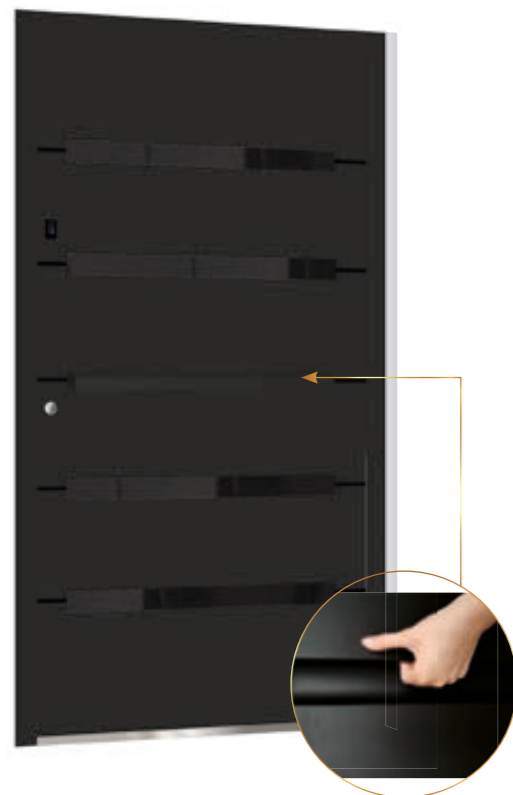
Frame color: RAL 1018  
 Sash color: RAL 1018  
 Applications: round holes with VSG  
 33.1 + frosted glass  
 Handle: QA10, RAL 9005, 1600mm





### P133

Frame color: RAL 9005  
 Sash color: RAL 9005  
 Application: rust, milling  
 Handle: QA10, RAL 9005, 1600mm



### P134

Frame color: RAL 9005  
 Sash color: RAL 9005  
 Applications: milling  
 Glass: VSG 33.1 + reflex graphite  
 Handle: KA1, RAL 9005, 800mm



### P135

Frame color: RAL 9005  
 Sash color: Winchester lacquer  
 Appliqués: milling  
 Glass: VSG 33.1 + reflex graphite  
 Handle: KA1, RAL 9005, 800mm



### P136

Frame color: RAL 7016  
 Sash color: RAL 7016  
 Applications: milling, RAL 9005 gloss lacquered application  
 Glass: VSG 33.1 + reflex graphite  
 Handle: QA10, RAL 9005, 1700 mm





### P137

Frame color: RAL 9005  
Sash color: RAL 9005  
Application: RAL 3020, milling  
Glass: VSG 33.1 + reflex graphite  
Handle: Q10X, RAL 9005/3020, 1600mm



### P138

Frame color: RAL 7016  
Sash color: RAL 7016  
Applications: faced painted RAL 9005, milling  
Glass: VSG 33.1 + sandblasted according to the pattern  
Handle: Z15, 1700mm



### P140

Frame color: RAL 9005  
Sash color: RAL 9005  
Applications: Winchester lacquer, milling, house number  
Glass: VSG 33.1 + sandblasted according to the pattern  
Handle: Q10, 304 stainless steel, 1400mm



### P141

Frame color: RAL 7016  
Sash color: RAL 7016  
Applications: faced lacquered RAL 9005, milling  
Glass: VSG 33.1 + sandblasted  
Handle: Q10, 304 stainless steel, 1800mm





### P142

Frame color: RAL 9005  
 Sash color: RAL 9005 / decoral Winchester  
 Applications: vertical 3D laths in decoral Winchester color  
 Handle: QA10, RAL 9005, 1600mm



### P143

Frame color: RAL 9005  
 Sash color: Turner Oak Malt veneer  
 Applications: Vertical 3D laths in RAL 9005 color  
 Handle: QA10, RAL 9005, 1600mm



### P144

Frame color: RAL 7021  
 Sash color: RAL 7021  
 Applications: 3D vertical laths in Decoral Winchester color  
 Handle: Q10, 304 stainless steel, 1600mm



### P145

Frame color: RAL 9005  
 Sash color: Turner Oak Malt veneer  
 Applications: 3D vertical laths in RAL 9005 color  
 Handle: PZV matching door panel height, RAL 9005 color





#### P146

Frame color: RAL 9005  
Wing color: RAL 9005  
Applications: vertical 3D laths in dekoral Winchester color  
Handle: PZV matching door panel height, RAL 9005 color



#### P147

Frame color: RAL 9005  
Sash color: RAL 9005  
Glass: Satinovo  
Applications: Black lacquered glass and vertical 3D laths in Dekorall Winchester color  
Handle: Q10 40x20, 1200mm stainless steel



#### P148

Frame color: RAL 9005  
Sash color: RAL 9005  
Applications: 3D vertical slats in dekoral Winchester color  
Handle: Q10 40x20, 1400mm stainless steel



#### P149

Frame color: RAL 7016  
Sash color: RAL 7016  
Applications: 3D vertical slats in dekoral Winchester color  
Handle: KA1 - integrated, RAL 7016, 1600mm

DESIGNED BY

# DESIRE

OF BEING EXTRAORDINARY

We like to own items that make us stand out. For centuries, mankind has emphasised its best taste with exclusive additions to their lives, including jewellery, which has always indicated high social and material status, a sense of style and emphasised the beauty of those who wear it. The DESIRE series was created in the process of designing doors that, just like jewellery, highlight their exclusivity with the shine of glass, used in doors intentionally to visually create a kind of jewellery for finely designed buildings.





### D201

Frame color: RAL 7016  
 Sash color: Woodec Oak Concrete veneer  
 Application: black glass  
 Glass: VSG 33.1 + pattern sandblasting  
 Handle: QA10 40x20, 1600mm in stainless steel color



### D202

Frame color: RAL 9016  
 Sash color: RAL 9016  
 Application: black glass  
 Glass: VSG 33.1 + frosted  
 Handle: QA10 40x20, 1800mm in RAL 9005 color.



### D203

Frame color: RAL 7016  
 Sash color: RAL 7016  
 Application: black glass, milling  
 Glass: VSG 33.1 + pattern sandblasting  
 Handle: P10 Fi30, 1800mm in stainless steel color



### D204

Frame color: RAL 7016  
 Sash color: RAL 7016, Woodec veneer  
 Applications: black glass, milling  
 Glass: VSG 33.1 + frosted  
 Handle: PA10 Fi30 - 1800mm in RAL 9005 color



### D205

Frame color: RAL 7001  
 Sash color: RAL 7001  
 Applications: black glass, milling  
 Handle: P10 Fi30 - 1400mm in stainless steel color





### D206

Frame color: RAL 9016  
 Sash color: RAL 9016  
 Applications: black glass, 3D stainless steel  
 Glass: VSG 33.1 + frosted  
 Handle: P10 Fi30 - 1800mm in stainless steel color



### D207

Frame color: RAL 3020  
 Sash color: RAL 3020  
 Application: faced lacquered in RAL 9005 gloss or glued LACOBEL application black, milling  
 Handle: QA10 - 2000mm in RAL 9005 color



### D208

Frame color: RAL 9005  
 Sash color: RAL 9005  
 Application: faced lacquered RAL 9005 gloss or glued LACOBEL application black, milling  
 Handle: Q10 - 2000mm in stainless steel color



### D209

Frame color: RAL 9005  
 Sash color: RAL 9005  
 Application: faced lacquered RAL 9005 gloss or glued LACOBEL application black, milling  
 Handle: Q10 - 2000mm in stainless steel color







### D210

Frame color: RAL 7016  
Sash color: RAL 7016  
Applications: Black glass, stainless steel  
Handle: Q10 40x20mm, 1400 mm, stainless steel



### D211

Frame color: RAL 9005  
Sash: 6mm tempered / enameled glass  
Beveled glass edges  
Handle: VP39 Lacobel



### D212

Frame color: RAL 9005  
Sash: 6mm tempered / enameled glass  
Beveled glass edges  
Applications: milling  
Handle: VP39 Lacobe



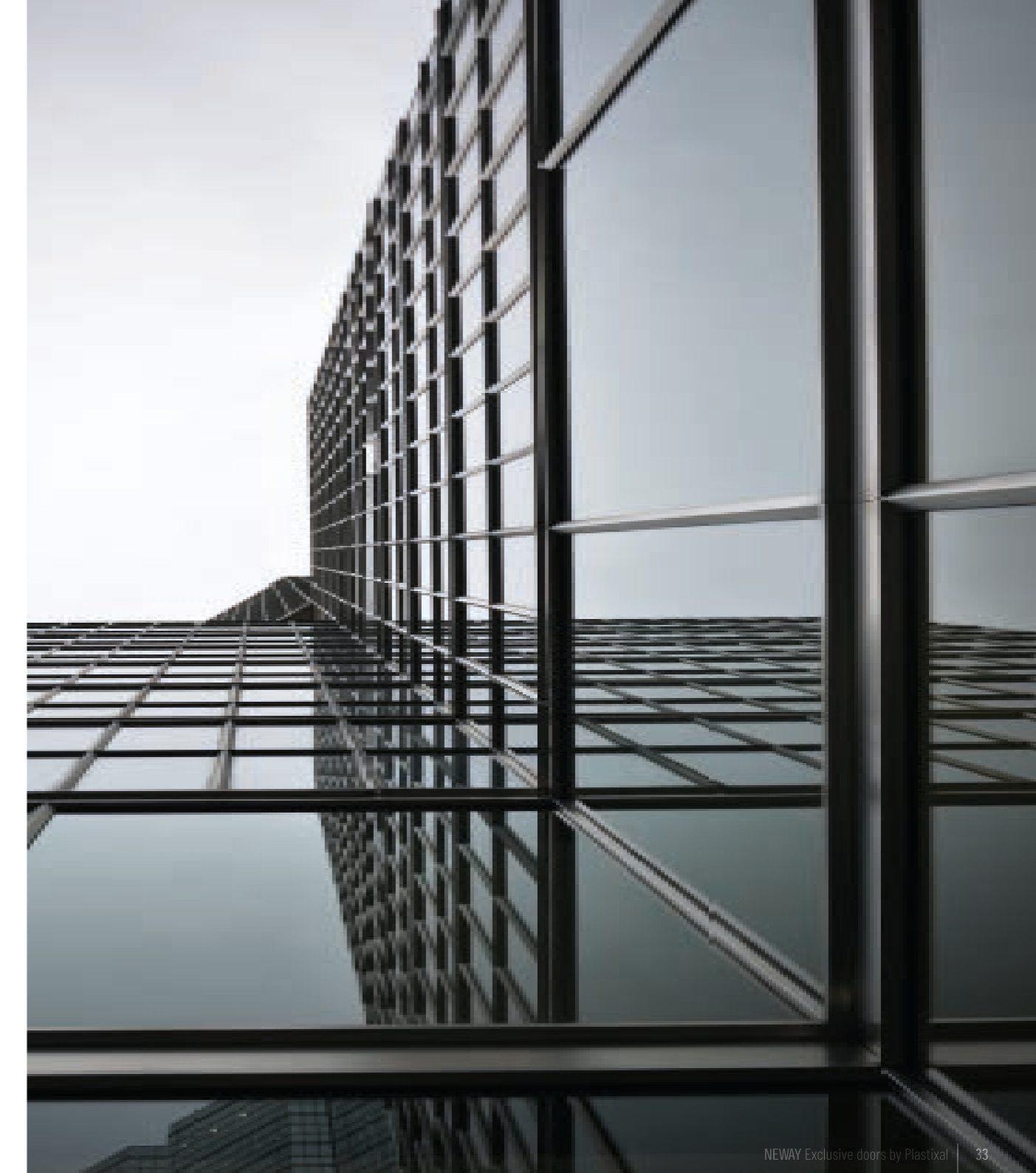
### D213

Frame color: RAL 9005  
Sash: 6mm tempered / enameled glass  
Chamfered glass edges  
Handle: KA1 - integrated, 1600mm, LED cold



### D214

Frame color: RAL 9005  
Panel: 6mm tempered / enameled glass  
Beveled glass edges  
Applications: milling  
Handle: KA1 - integrated, 1600mm, LED cold





#### D215

Frame color: RAL 9005  
Leaf: your design - 3D digital print  
Handle: Q10 - 1600mm in RAL 9005 color



#### D216

Frame color: RAL 9005  
Leaf: your design - 3D digital print  
Handle: PW21 with flat bar, height matched to the sash

DESIGNED BY

# HARMONY

WITH NATURAL MATERIALS

The HARMONY series was born from the daily need to be surrounded by objects that nature has given birth to and those that make part of our natural environment. Most of us feel a surge of inner peace and quiet when looking at products of the nature. This is the power of harmony with nature that makes people happier. Perhaps this is the path you choose for you and your door?



### H301

Frame color: RAL 9005  
 Sash color: Makalu natural stone  
 Handle: QA10 - 1800mm in RAL 9005 color



### H302

Frame color: RAL 7016  
 Wing color: RAL 7016 + Makalu natural stone  
 Applications: 3D stainless steel  
 Handle: Q10 - 1800mm in stainless steel color



*Stone is a specimen of beauty and power of nature. No other material reflects perfection of nature in such a way. Its irregular structure, original form and rich colouring qualities help create unique and one-of-a-kind door designs.*



### H303

Frame color: RAL 7016  
 Leaf color: Annapurna natural stone  
 Glass: VSG 33.1 + sandblasted according to the pattern  
 Handle: Q10 - 800mm in stainless steel color





### H304

Frame color: RAL 7016  
 Sash color: RAL 7016 + Annapurna natural stone  
 Applications: 3D stainless steel  
 Handle: QA10, 1800mm in RAL 9005 color



### H305

Frame color: RAL 9017  
 Sash color: RAL 9017 + Everest natural stone  
 Applications: 3D stainless steel  
 Handle: Q10, 800mm in stainless steel color



### H306

Frame color: RAL 9005  
 Leaf: natural stone Everest  
 Handle: KA1 - 1600mm, integrated, RAL9005

MAKALU

EVEREST

ANNAPURNA



### H307

Frame color: RAL 9005  
Sash color: Real oiled oak  
Application: convex glass G 1654 Black Magic  
Glass: VSG 33.1 + frotsted  
Handle: 9.200.14, 1400mm, RAL 9005

\*Maximum door size 1200 x 2450 mm.



### H308

Frame color: RAL 9005  
Sash color: Real oiled oak  
Handle: 9.200.14, 1400mm, RAL 9005

\*Maximum door size 1200 x 2450 mm.



### H309

Frame color: RAL 7016  
Sash color: Real oiled oak / RAL 7016  
Handle: 9.200.14, 1400mm, stainless steel

\*Maximum door size 1200 x 2450 mm.





### H310

Material: quartz sinter  
Color: Concrete Silk  
Applications: 3D stainless steel  
Handle: K1L 550 x 155 in stainless steel color  
Inward opening doors only



### H311

Material: quartz sinter  
Color: Iron Corten Satin  
Applications: 3D stainless steel  
Handle: K1L 550 x 155 in stainless steel color  
Inward opening doors only



### H312

Material: quartz sinter  
Color: Iron Grey Satin  
Applications: 3D stainless steel  
Handle: K1L 550 x 155 in stainless steel color  
Inward opening doors only



### H313

Material: quartz sinter  
Color: Concrete Silk  
Handle: QA 10, 40x20 mm, 1600mm, RAL 9005  
Inward opening doors only



### H314

Material: quartz sinter  
Color: Iron Corten Satin  
Handle: QA 10, 40x20 mm, 1600mm, RAL 9005  
Inward opening doors only



### H315

Material: quartz sinter  
Color: Iron Grey Satin  
Handle: QA 10, 40x20 mm, 1600mm, RAL 9005  
Inward opening doors only



### H316

Material: quartz sinter  
Color: Concrete Silk  
Applications: 3D stainless steel  
Handle: Q10, 40x20 mm, 1400 mm, stainless steel  
Inward opening doors only



### H317

Material: quartz sinter  
Color: Iron Corten Satin  
Applications: 3D stainless steel  
Handle: Q10, 40x20 mm, 1400 mm, stainless steel  
Inward opening doors only



### H318

Material: quartz sinter  
Color: Iron Grey Satin  
Applications: 3D stainless steel  
Handle: Q10, 40x20 mm, 1400 mm, stainless steel  
Inward opening doors only



### H319

Material: quartz sinter  
Color: Concrete Silk  
Glass: VSG 33.1 + Sandblasted according to the pattern  
Applications: 3D stainless steel  
Handle: Q10, 40x20 mm, 1600 mm, stainless steel  
Inward opening doors only



### H320

Material: quartz sinter  
Color: Iron Corten Satin  
Glass: VSG 33.1 + Sandblasted according to the pattern  
Applications: 3D stainless steel  
Handle: Q10, 40x20 mm, 1600 mm, stainless steel  
Inward opening doors only



### H321

Material: quartz sinter  
Color: Iron Grey Satin  
Glass: VSG 33.1 + Sandblasted according to the pattern  
Applications: 3D stainless steel  
Handle: Q10, 40x20 mm, 1600 mm, stainless steel  
Inward opening doors only



### H322

Material: quartz sinter  
Color: Concrete Silk  
Glass: Sandblasted  
Applications: 3D stainless steel  
Handle: Q 10, 40x20 mm, 1400 mm, stainless steel  
Inward opening doors only



### H323

Material: quartz sinter  
Color: Iron Corten Satin  
Glass: Sandblasted  
Applications: 3D stainless steel  
Handle: Q 10, 40x20 mm, 1400 mm, stainless steel  
Inward opening doors only



### H324

Material: quartz sinter  
Color: Iron Corten Grey  
Glass: Sandblasted  
Applications: 3D stainless steel  
Handle: Q 10, 40x20 mm, 1400 mm, stainless steel  
Inward opening doors only



### H325

Material: quartz sinter  
Color: Concrete Silk  
Handle: KA1 - 1600mm, integrated, RAL9005  
Inward opening doors only



### H326

Material: quartz sinter  
Color: Iron Corten Satin  
Handle: KA1 - 1600mm, integrated,  
RAL9005  
Inward opening doors only



### H327

Material: quartz sinter  
Color: Iron Grey Satin  
Handle: KA1 - 1600mm, integrated,  
RAL9005  
Inward opening doors only



### H328

Material: Veneer - White Rock  
Color: RAL 7035  
Applications: 5mm stainless steel  
Handle: K1L 200x200  
Inward opening doors only  
Maximum dimension: 1200mm x 2300mm



### H329

Material: Veneer - White Rock  
Color: RAL 7035  
Applications: 5mm stainless steel  
Handle: QS 1000mm  
Inward opening doors only  
Maximum dimension: 1200mm x 2300mm



### H330

Material: Veneer - White Rock  
Color: RAL 7016  
Applications: 5mm stainless steel  
Handle: Q10 1600mm, stainless steel  
Inward opening doors only  
Maximum dimension: 1200mm x 2300mm



### H331

Material: veneer - Black Rock  
Handle: PS21, matched to panel  
Inward opening doors only  
Maximum dimension: 1200mm x 2300mm



### H332

Material: veneer - Black Rock  
Color: RAL 7016  
Applications: 5mm stainless steel  
Handle: K1L 200x200  
Inward opening doors only  
Maximum dimension: 1200mm x 2300mm



### H333

Material: veneer - Black Rock  
Color: RAL 9005  
Applications: 5mm stainless steel  
Handle: QS 1000mm  
Inward opening doors only  
Maximum dimension: 1200mm x 2300mm





### H334

Material: Veneer - Sand Rock  
Color: RAL 7016  
Applications: 5mm stainless steel  
Handle: Q10 Stainless steel, 1600mm  
Inward opening doors only  
Maximum dimension: 1200mm x 2300mm



### H335

Material: Veneer - Sand Rock  
Applications: 5mm stainless steel  
Handle: QA10 9005, 1600mm  
Inward opening doors only  
Maximum dimension: 1200mm x 2300mm



### H336

Material: Veneer - Carbon Rock  
Color: RAL 9005  
Applications: 5mm stainless steel  
Handle: QS Stainless steel, 1000mm  
Inward opening doors only  
Maximum dimension: 1200mm x 2300mm



### H337

Material: Veneer - Sand Rock  
Color: RAL 9005  
Applications: 5mm stainless steel  
Handle: K1L 200x200  
Inward opening doors only  
Maximum dimension: 1200mm x 2300mm



### H338

Material: veneer - Grey Rock  
Handle: QA10 9005, 1600mm  
Inward opening doors only  
Maximum dimension: 1200mm x 2300mm



### H339

Material: veneer - Gold Rock  
Handle: QA10 9005, 1600mm  
Inward opening doors only  
Maximum dimension: 1200mm x 2300mm



## How are NEWAY doors constructed?

- 1 A 95mm thick door leaf with an overlay panel on both sides.
- 2 Five-point black lock in three equipment standards, with hooks and ratchet bolts
- 3 Roller or covered hinges
- 4 FZG cylinder in class C of burglary resistance
- 5 In the case of doors with a side extension (one or two), the entire structure is made in one frame
- 6 Fingerprint reader / Numeric keypad / RFID reader
- 7 Pull bar or handle on the outside
- 8 Handle from the inside
- 9 Single-sided design or double-sided on request (selected models)
- 10 Anti-theft bolts of the hinge side
- 11 Cable feedthrough from sash to frame (electronics power supply and data transmission)
- 12 Possibility to make doors with different colors externally / internally
- 13 VSG 33.1 glass with black thermo frames
- 14 Three-chamber profile with thermal break
- 15 Aluminum threshold, black, 20 mm
- 16 Triple seal
- 17 IO module for worldwide control



Presented in the catalog doors and accessories have in some graphic materials special equipment, beyond the basic standard "Silver" | Door catalog does not constitute an offer within the meaning of the Civil Code | The manufacturer reserves the right to make changes | The specificity of printing on paper causes that the colors obtained during the varnishing and lining of door elements may differ from the colors shown in the illustrations and photographs, so they should be treated only as illustrative. This also applies to glass patterns and colors. All prices in the catalog are net prices. The value of VAT should be added to them, in the amount of 8% (when doors are ordered with installation service, offered by the Seller) or 23% (when doors are ordered without installation). All rights reserved © Reproduction and use, in part or in whole, only by permission of Firma Plastixal Kolakowski Mariusz.

## 3 door standards

High standard, great quality, reliability

### SILVER

A multiple-point locking device with hooks and ratchet bolts.



This combination offers maximum security: steel bolts prevent the door from being forced, and hooks prevent the frame and leaf from being pulled away from each other.

Completely sealed door closure guarantees high thermal insulation.

Closing and opening with a key.

**RC 3**

### GOLD

A multipoint automatic-mechanical locking device with hooks and ratchet bolts.



The door is locked automatically with help of mechanical triggers. The hooks in the additional cassettes are released when the door is closed. The automatic function is realized by means of mechanical SoftLock triggers integrated in the latch bolts.

The door can be unlocked and opened with a key, access control system or telephone.

Integrated daylight unlocking on the lock slat (slider) and Comfort function,

**Lock anti-burglary class**

**RC 3**

## All of NEWAY standards

are equipped with exclusive black trim and black cylinders



Maksimum możliwości, najwyższy standard

### PLATINUM

Full-motor lock with hooks and ratchet locks.

Fully automatic locking using an Halla sensor.

A standard IO module that enables control from anywhere on earth, as well as connecting and controlling third-party systems from Siegenia Comort applications.

The door can be locked and unlocked with a key, access control system or telephone.

Integrated daylight unlocking on the lock slat (LED button)

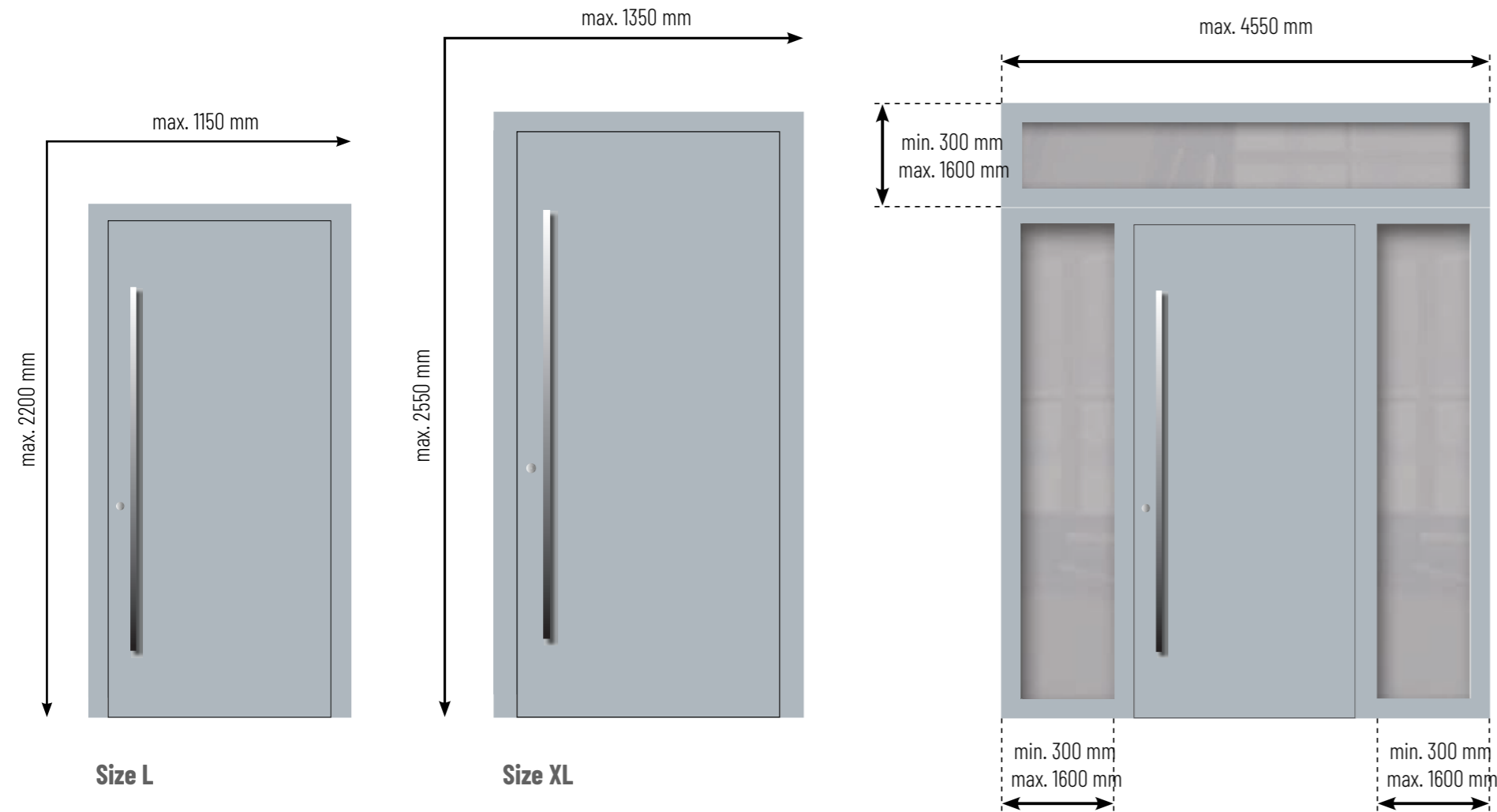
An integrated Comfort function that allows the door to be unlocked with a single movement of the handle.

**Lock anti-burglary class**

**RC 3**








## Dimensions

The doors presented in the catalog are available according to the price list in sizes within the L and XL size ranges. On special order, we also produce doors with sizes beyond the XL size range and they are priced individually. Doors over 2550 mm in height are made in Silver only. Lightings below and above the dimensions given in the drawings are not covered by the warranty. Door models H307, H308, H309 are manufactured up to a maximum size of 1200mm x 2450mm.



## Parameters



-  Parameters confirmed by tests and certificates for a reference door 1230x2180 mm
-  Flush profiles
-  Security of door locking systems in class up to RC3
-  Excellent sound insulation
-  Excellent thermal insulation  
 $U_p$  from 0,68 W/(m<sup>2</sup>·K)
-  Resistance to wind load class C5/B5 (2000Pa) by PN-EN 12210:2016  
Air permeability - class 4 by PN-EN 12207:2001 i PN-EN 12207:2017
-  Waterproof - class E1350 by PN-EN 12208:2001





# BLACK design

**Set apart - NEWAY brand doors are unique**

Our doors have been equipped with black handrail, black handle, black hinges and other hardware and black control electronics



# SAFETY PLUS



## Each NEWAY door is equipped with the PLUS security package

The package includes: the highest burglary resistance class „C“ insert, anti-burglary bolts on the hinge, safety glass (applies to the pane as part of the active sash), and espagnolettes with locks of burglary resistance class RC3

## Security is our standard

### Class C cylinder - excellent resistance to burglary

- highest level of security against burglary
- 6 lockings pins
- special shape of lock cylinder that affects its durability
- cylinder pins hardened with a nickel coating
- housing pins: made of brass and steel
- protection against drilling the cylinder
- 5 keys with a special profile resistant to opening by manipulation
- key replacement with security card



### Safety glass 33.1

- All glazing packages in the door leaf are equipped as standard with safety glass VSG 33.1 and black polyurethane frame with increased thermal insulation.

### Anti-theft bolts of the hinge side

- They provide additional security against attempts to break down the door when the lock cannot be forced.
- Interlocking with each other, the two wedging elements effectively protect the areas most vulnerable to burglary, making it virtually impossible to break the door on the hinge side.
- Effective optimization of burglar protection.
- A completely concealed solution with a simple modern form.



### Quiet, quieter, soft-lock

For doors that are opened several times a day, silent closing makes an advantage and ensures stress-free operation. The Softlock has a stable plastic cap on the latch, which means that nothing but a quiet click is heard from outside. The lock loses none of its durability and security at the same time.



## Additional door equipment electronics and security



### Door closer concealed in the leaf

The retractable door closer for single leaf doors is completely hidden in the leaf plate. The sliding rail is visible only when the door is open. In addition to the high aesthetics of this solution, its undoubted advantages include the fact that the elements for adjusting the closing speed, closing function and opening damping are available after the door closer is embedded in the leaf.



### Access control up to the 21st century standards

As part of the GOLD and PLATINUM standard, the door's espagnolette drive mechanism can be activated not only with a key, but also with a finger-print reader or numeric keypad, making opening the door easy and pleasant, and allowing access only to authorised people, even if they don't remember to grab their keys. Communication with the system is provided via bluetooth. Special-purpose application enables managing the equipment. A WiFi lo Smart module is also available to enable door operation from anywhere on Earth.

### Automatic door closer concealed in the door leaf

The operator is recessed into the door leaf or frame and meets the highest stylistic requirements. The opening and closing speed can be adjusted individually. The low-power mode function opens the door with reduced travel speed, thus meeting the highest safety requirements. The obstacle detection system recognizes an obstacle by touch and stops the opening or closing process. Automatic reversing recognizes the obstacle and reverses to the opening position.



Gold

Platinum

### Daytime unlocking

Temporarily disabling the automatic function with a small lever or LED button located on the faceplate allows you to leave and return to the building without a key. The solution can be used in conjunction with a day/night module or an electric door strike.



### Day/night function

With this function, you can easily release the catch of the main lock and auxiliary locks with a slider just by adjusting the mechanical lever at the three modules. This function does not require an electric strike.



### Electric strike with day/night function

An aversion electric strike is a type of striker which, upon receiving a current supply, opens the locking mechanism of the tongue lock. Version with a switch.

**What are the advantages of choosing the PLATINUM option?**

1. Multipoint locking system with GENIUS drive enables fully automatic, secure and convenient locking, either traditionally with a key or electronically with SMART solutions.
2. Magnetic release for quiet and gentle door locking.
3. GENIUS power supply - supports all the electronic devices of the NEWAY doors. No need for several different power supplies.
4. Aesthetically pleasing and durable, the built-in cable entry that powers the door electronics conceals cables from view and protects them from damage.
5. Access control system - can be linked to numerous smart home devices such as actuators, security system, alarm system, smart phone, etc.

**The PLATINUM standard also includes:**

- Permanent monitoring of correctness of locking - perfect tightness of locking (incomplete locking is signalled acoustically).
- In case of inadvertent failure to turn the key to close the door, the automatic multi-point locking system will do it for you (in case of burglary, the validity of insurance is preserved).
- A switch on the front panel allows you to adjust the locking mode of the espagnolette - day/night and leave the house without a key.
- Comfortable and quick opening from the inside using the handle („Comfort“ mechanism), which unlocks the door and, in addition to being comfortable, allows immediate escape in the event of an emergency occurring inside the building.
- Control by the KfVkeyless app from anywhere in the world and the Fingerprint app for fingerprint reader operation and user management.



**Switch, microswitch or microsensor**



**Button:**

Operation and compatibility with door openers or electric strikes of most manufacturers on the market, allows door opening.

**Microswitch and microsensor touch - common features:**

- Operation and compatibility with electro strikers or electro locks of most manufacturers on the market, allows opening and closing doors,
- Control of an external device, such as building lighting,
- Momentary pushbutton function for connecting a bell, for example,
- Selectable option with or without bell engraving

**Microswitch:**

- Controlling the light points in the handle on an on/off basis

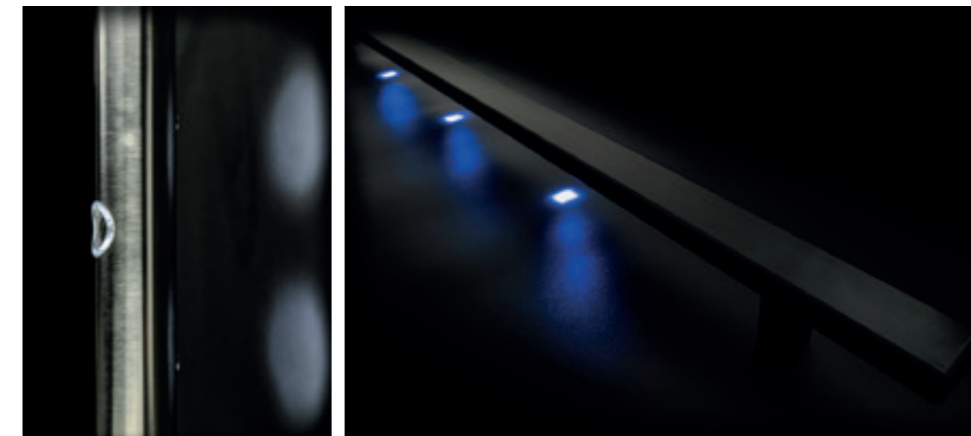
**Microsensor:**

- Ability to control one or two independent electrical systems: single-function or dual-function electronics,
- Control of light points in the handle, including the possibility of 30s timed illumination

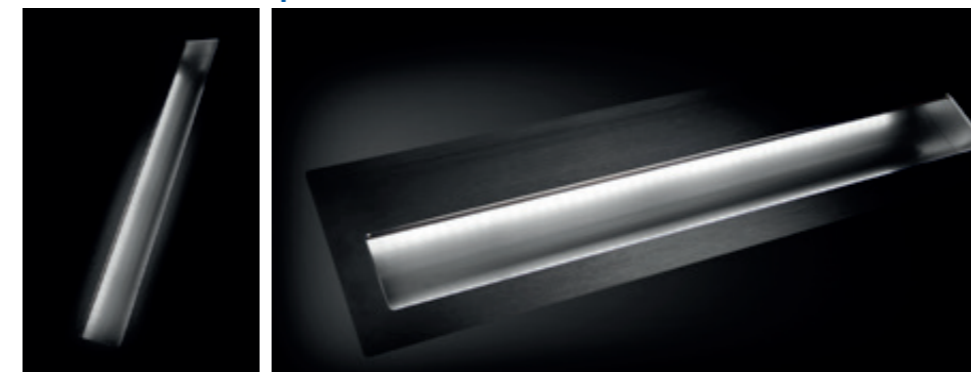
Available backlight colors:



**Illumination in the pull handles**



**Illumination in the flush pull handles**



**Table of equipment availability**

	SILVER	GOLD	PLATINUM
Black Design	+	+	+
RAL colors - textured finish	+	+	+
Anti-theft bolts of the hinge side	+	+	+
Class C cylinder with FZG function	+	+	+
Roller hinges	+	+	-
Covered hinges	surcharge	surcharge	+
Softlock	+	+	+
Button in pull bar			
Microsensor in pull bar			
Microswitch in pull bar		depends on the type of pull handle	
Illumination in the pull handles			
Daytime unlocking	-	+	+
Day/night function*	+	+	+
Electric strike with day/night function	surcharge	surcharge	surcharge
Reed switch / alarm sensor	surcharge	surcharge	surcharge
Fingerprint reader	-	+	+
Numeric keypad	-	+	+
RFID reader	-	+	+
Door operation via smartphone (bluetooth)	-	+	+
Door operation via smartphone from anywhere in the world (WiFi module)	-	surcharge	+
Concealed door closer	surcharge	surcharge	surcharge
Concealed automatic door closer	-	-	surcharge
Lock motor	-	+	+
Power supply**	+	+	+

\*if there is a pull handle from the outside  
\*\*if electronics are present

# stunning colors

## Matte or texture

All doors, which appear in the catalog in RAL colors, are painted matte or in a textured finish



## DECOR paint colors



## VENEER colors



Veneering is performed only for door leaves. The frame is painted in RAL color (any color) or wood-like decor

The peculiarities of printing on paper mean that the colors obtained during varnishing and pasting of door elements may differ from those shown in the illustrations and photographs.



## Door layouts with fanlights

Choose any layout with fanlights.  
Doors and fanlights will be made in a single frame, providing the structure with superior statics.



Left fanlight

Right fanlight

Right and left fanlight



Upper fanlight

Left fanlight + upper fanlight

Right fanlight + upper fanlight

Right and left fanlight + upper fanlight

## Szyby

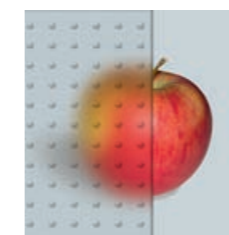
### Safety glass VSG 33.1 - standard

- Matt glass
- Vanceva Absolut Black
- Vanceva Polar White
- Reflex graphite
- Reflex bronze
- Reflex clear
- Venetian mirror
- P4 - Antiburglar glass
- Master-Carre
- Master-Ligne
- Chinchilla
- Sandblasted according to pattern

### Decorative glass: patterned and ornamented



▶ Sandblasted  
as per pattern



▶ Master-Carre  
colourless glass



▶ Master-Ligne  
colourless glass



▶ Chinchilla  
colourless glass





Pull handle Q10  
Stainless steel 304 / 316  
40 x 20  
300mm - 2000mm

Pull handle P10  
Stainless steel 304 / 316  
Fi 30  
300mm - 1800mm



Pull handle QA10  
RAL 9005  
40 x 20  
300mm - 2600mm

Pull handle PA10  
RAL 9005  
Fi 30  
300mm - 2600mm

Pull handles made of stainless steel



Stainless steel 304



Stainless steel 316



Brushed (default)



Polished



Sandblasted (max 1000 mm)

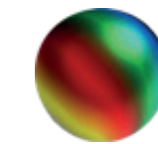
Pull handles made of aluminium



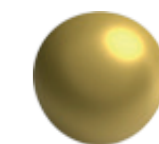
Aluminium



RAL 9005



Any RAL



Gold W3



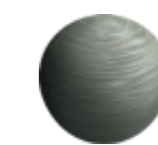
Gold W4



C-35 Black Anode F40



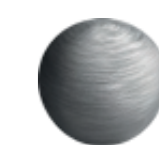
Silver



C-35 Inox F40



Anode



C-0 Anode F40

External pull handles

Pull handle QS

40x20  
1000mm

Stainless steel 304/316

Pull handle OS

Fi 30  
1000mm

Stainless steel 304/316

Pull handle PS21 z flat bar

80 x 10  
800 - 2500 - Pull handle  
50 - 1200 - Flat bar

Aluminium

Pull handle Q90 / QA90

40x20, 40x40  
300 - 2500 - Stainless steel  
300 - 2300 - Aluminium

Stainless steel 304/316

Aluminium

Pull handle Q135 / QA135

40x20, 40x40  
300 - 2500 - Stainless steel  
300 - 2300 - Aluminium

Stainless steel 304/316

Aluminium

External pull handles

Pull handle DP10

Fi 45, 25mm  
300 - 2100 - Stainless steel

Stainless steel 304/316

Pull handle Q10X/QA10X

40x10  
500 - 1800 - Stainless steel and aluminium

Stainless steel 304/316

Aluminium

Pull handle Q10B

40x10  
600,1200,1800 - Stainless steel

Stainless steel 304/316

Pull handle PS-W

100x5  
1500 - 2400 - Stainless steel

Stainless steel 304/316

Pull handle GPH

150x12  
600 - Stainless steel and glass

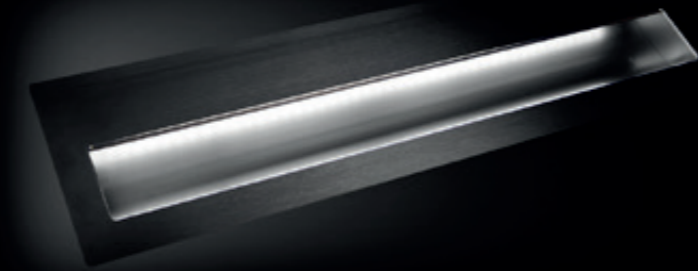
Stainless steel 304/316

Glass

**Flush pull handles**

**Pull handle KA1**  
Integrated with panel, flush  
61mm  
800 - 3000 mm

Aluminium



550x155

**Pull handle K1L**  
Integrated with panel,  
200x200, 250x150, 550x155, 1400x185,  
400x115

Stainless steel 304/316



Aluminium



250x150



Button - option

Button - option

**Handles and hinges**

**Handle H6 with engraving**  
150x36mm  
Aluminium



Silver



INOX



Anode



RAL



Black anode

**Roller hinge**



INOX



Anode



RAL

**Covered hinge**



Black



INOX



Anoda





**NEWAY**

EXCLUSIVE DOORS

Manufacturer's address:  
Stare Bozejewo 44, 18-430 Wizna, POLAND  
info@newaydoors.com  
trade@newaydoors.com

[WWW.NEWAYDOORS.COM](http://WWW.NEWAYDOORS.COM)